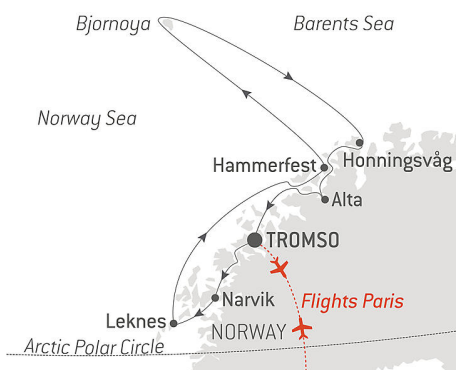


Nordic Discoveries & Traditions

From **21/3/2024**
to **31/3/2024**

Ship: **LE BELLOT**

From **Tromso**
to **Tromso**



Gastronomic cruise in partnership with *Cuisine et Vins de France*, the reference magazine for gastronomy, with featured guest Anne-Sophie Pic, the most starred chef in the world.

Set off aboard *Le Bellot* for a **brand-new 11-day cruise** and enjoy an exceptional experience exploring Norway in the winter. From **Tromsø**, you will sail towards these magical lands, where your exceptional itinerary will take in snow-capped summits, immaculate landscapes and the discovery of millennial traditions.

The beginning of this trip beyond the Arctic Circle will be marked by an **immersion in the land of the Sami**. From your disembarkation in **Narvik**, in the very heart of captivating summits plunging into the sumptuous Ofotfjord, you will be invited to explore the ancestral tales of this **reindeer-herding indigenous people**.

Your ship will then make its way south where you will witness the mysterious charm of the **Lofoten** archipelago. These islands have landscapes of surreal beauty alternating between sea, spectacular fjords, mountain slopes and bright-coloured huts on stilts.

Then, *Le Bellot* will set sail for **Hammerfest**, the northernmost town in the world. During your port of call in this charming fishing port, you will have the opportunity to explore the **Struve Geodetic Arc**, a chain of triangulations stretching from Norway to the Black Sea, and the first technical and scientific tool to become a UNESCO World Heritage Site.

You will also sail by **Bear Island**, halfway between the North Cape of Norway and the South Cape of Spitsbergen. From your ship, you will marvel at this small strip of land with its craggy coastline and high jagged cliffs.

Le Bellot will once again set sail south, for the captivating **Honningsvåg**. This port of call will take you to the northernmost point of Europe: the **North Cape**. On this cliff, home to the emblematic Milestone, a globe-shaped monument, allow yourself the time to dream as you gaze upon the vastness of the Barents Sea.

You will then discover **Alta**. With the polar night in full swing, you may be

lucky enough to admire the **unique colours of the Northern Lights** as they ripple and spin above the Arctic Circle.

Your trip into the very heart of the immenseness of the Norwegian Arctic polar world will end in **Tromsø**, your disembarkation port.



The information in this document is valid as of 19/4/2024

Nordic Discoveries & Traditions

YOUR STOPOVERS :

TROMSO

Embarkation 21/3/2024 from 4:00 pm to 5:00 pm

Departure 22/3/2024 at 6:00 pm

In the north of the Arctic circle you'll discover **Tromsø**, a secluded town located in the county of Troms. Norwegians call it the "Paris of the north". You'll soon see why when you discover its extensive neoclassical architectural heritage. A stunning example is the **Arctic cathedral**, a major monument whose stylistic purity echoes the outline of the mountains surrounding the town.

NARVIK

Arrival 23/3/2024 early morning

Departure 23/3/2024 early evening

Beyond the Arctic Circle, you will discover **Narvik**, nestling in the heart of impressive mountains that plunge into the Ofotfjord. It is on the verge of obtaining the "sustainable destination" label, a national label awarded to destinations that are committed to a sustainable approach to tourism for the long term. You will be mesmerised by its scenery. From Narvik, it is possible to take the Ofoten Line towards Sweden. This historic railway once linked the mineral-rich mines of Kiruna in Sweden to the ice-free port of Narvik. You will experience unique moments whether meeting the Sami people reindeer herders who have ancestral traditions and yet embrace modernity.

LEKNES, LOFOTEN

Arrival 24/3/2024 early morning

Departure 24/3/2024 late evening

Way beyond the Arctic Circle, **Lofoten Islands** are truly considered to be in "another world". A jewel of nature in its most pristine state, this archipelago with its jagged coastline offers you majestic settings of high alpine summits, sandy beaches, green prairies and fjords of a deep blue, where countless bird colonies make their nests. Whether you visit Å, or Nusfjord, listed by UNESCO, enjoy authentic and memorable moments.

AT SEA

Arrival 25/3/2024

Departure 25/3/2024

During your journey at sea, make the most of the many services and activities on board. Treat yourself to a moment of relaxation in the spa or stay in shape in the fitness centre. Depending on the season, let yourself be tempted by the swimming pool or a spot of sunbathing. This journey without a port of call will also be an opportunity to enjoy the conferences or shows proposed on board, depending on the activities offered, or to do some shopping in the

boutique or to meet the PONANT photographers in their dedicated space. As for lovers of the open sea, they will be able to visit the ship's upper deck to admire the spectacle of the waves and perhaps be lucky enough to observe marine species. A truly enchanted interlude, combining comfort, rest and entertainment.

HAMMERFEST

Arrival 26/3/2024 early morning

Departure 26/3/2024 midday

Hammerfest, located on the north-western coast of the island of Kvaløya, beyond the **70th parallel north**, is often considered the northernmost town in the world. Conserved in an **immaculate natural setting**, this charming fishing port enjoys a rich history, as is evidenced by various vestiges dating back to the Stone Age, Napoleonic wars or the Second World War. During your port of call, you will have the opportunity to discover the **Struve Geodetic Arc**, a chain of triangulations stretching across Europe from Hammerfest to the Black Sea, and the first technical and scientific object to become a UNESCO World Heritage Site.

SAILING ALONG BJORNØYA (BEAR ISLAND)

Arrival 27/3/2024

Departure 27/3/2024

Halfway between Norway and Spitsbergen, you will sail not far from the coastlines of **Bjørnøya**, the southernmost island of Svalbard. From your ship, observe this isolated piece of land discovered in 1596 by the Dutch navigator Willem Barents, then looking for the Northwest Passage. Following a tough fight between a polar bear and the members of the expedition, he dubbed the place **Bear Island**. Regularly covered by a thick layer of fog, Bjørnøya shelters a meteorological station built in 1923, which is still in operation. Declared a **nature reserve** in 2002, the island is above all home to an **enormous colony of sea birds**: skuas, guillemots, puffins, Tridactyl gulls, petrels, gulls and little auks all coexist here.

HONNINGSVÅG

Arrival 28/3/2024 midday

Departure 28/3/2024 early evening

If you feel like you have arrived at the end of the world in **Honningsvåg**, it is because this is the case. Halfway between Oslo and the North Pole, it competes with **Hammerfest** for the status of "the northernmost town in Continental Europe". Colourful houses light up this charming and typically Norwegian fishing port nestled in the hollows of the region's mountainous terrain. Travellers come to stay in the village to go to the **North Cape**. At the end of the road, you will see the globe that indicates that you are at the very end of Europe. At this point, only the Svalbard archipelago separates you from the North Pole. There is sea as far as the eye can see. The Northern Lights, the view of the immense cliff plunging into the sea, the thousands of puffins, gannets and cormorants that spin around you: everything here is grandiose.

ALTA

Arrival 29/3/2024 early morning

Departure 30/3/2024 early evening

Beyond the Arctic Circle, **Alta**, in the far north of Norway, is the biggest city in Finnmark county. Alta will reveal itself to you at the end of the eponymous fjord, Altafjorden. The region offers a mix of forest, mountainous and coastal landscapes. It is on the verge of obtaining the “sustainable destination” label, a national label awarded to destinations that are committed to a sustainable approach to tourism for the long term. Alta invites you to experience unique moments, whether meeting the **Sami people** reindeer herders who have ancestral traditions and yet embrace modernity or during walks, snowshoe hikes or dog sledding, depending on the season.

TROMSO

Arrival 31/3/2024 early morning

Disembarkation 31/3/2024 at 7:00 am

In the north of the Arctic circle you'll discover **Tromsø**, a secluded town located in the county of Troms. Norwegians call it the “Paris of the north”. You'll soon see why when you discover its extensive neoclassical architectural heritage. A stunning example is the **Arctic cathedral**, a major monument whose stylistic purity echoes the outline of the mountains surrounding the town.