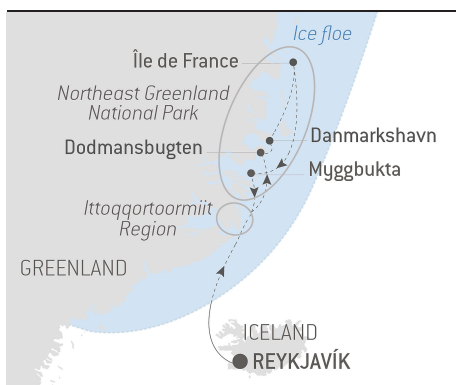


# Discovering the Northeast Greenland National Park - with National Geographic

From **10/5/2022**  
to **22/5/2022**

Ship: **LE COMMANDANT CHARCOT**

From **Reykjavík**  
to **Reykjavík**



## In collaboration with National Geographic Expeditions

Set sail with PONANT on a **brand-new itinerary, specifically designed for *Le Commandant Charcot***, the first hybrid electric polar exploration ship. This 13-day exploration cruise will offer you the unique opportunity to discover the **north-east coast of Greenland**, one of the most difficult regions to access in the Far North, in a particularly precocious and hostile season, spring, when the ice and snow are still ubiquitous.

Setting sail from Reykjavík, you will first reach the **region of Ittoqqortoormiit**, home to a small community of Greenlanders: this will be the occasion to find out about the life of the last hunters in the polar regions.

Then, you will head for the **Northeast Greenland National Park**, the largest national park in the world and a UNESCO Biosphere Reserve: here, there is no trace of human life, just alpine magically coloured landscapes as far as the eye can see and powerful glaciers.

In the **spring**, the solid and powerful sea ice remains in charge of the visitors who venture out to it. It is the perfect time to observe the **exceptional Arctic wildlife** that it shelters. The polar bear is king here. You will perhaps admire, roaming this white desert, a solitary male in search of the ideal hunting or fishing spot, or a mother teaching her cub the secrets of survival.

You will attempt to reach the north of the national park, and Ile de France, discovered by the Duke of Orleans in 1905. This particularly remote region is protected by **thick pack ice**, brought directly from the North Pole by the transpolar current. You will then reach Reykjavík, where you will leave the ship.

*We are privileged guests in these extreme lands where we are at the mercy of weather and ice conditions. Our navigation, mainly in the fjords, will be determined by the type of ice we come across; as the coastal ice must be preserved, we will take this factor into account from day to day in our itineraries. The sailing programme, outings, activities and observation of fauna cannot be guaranteed and are subject to weather and ice conditions. The experiences are unique and vary from day to day and for each departure. The Captain and the Expedition Leader will make every effort to ensure that your experience is as rich as possible, while respecting safety instructions and regulations imposed by the AECO.*



The information in this document is valid as of 4/12/2021

# Discovering the Northeast Greenland National Park - with National Geographic

## YOUR STOPOVERS :

### REYKJAVÍK

Embarkation 10/5/2022 from 4:00 pm to 5:00 pm

Departure 10/5/2022 at 6:00 pm

Iceland's capital stretches along the edge of a vast bay in the west of the country. **Perlan**, the “Pearl of Reykjavík”, a museum located on Óskjuhlíð hill, offers a panoramic view of the lush, green landscapes. A little further, one can easily spot the signpost showing the way to the evangelical **Hallgrímskirkja** church, and to the historical centre where one can stroll along the Skólavörðustígur and the Laugavegur, two lively streets with charming small shops. For some relaxation just outside of the city, visitors have the opportunity to visit the Reykjanes peninsula and its famous thermal lagoons of the **Blue Lagoon**.

### AT SEA ABOARD LE COMMANDANT CHARCOT

Arrival 11/5/2022

Departure 12/5/2022

Spend exceptional moments sailing aboard *Le Commandant Charcot*, the world's first luxury polar exploration vessel and the first PC2-class polar cruise ship capable of sailing into the very heart of the ice, on seas and oceans which the frozen conditions render inaccessible to ordinary ships. *Le Commandant Charcot* is fitted with oceanographic and scientific equipment selected by a committee of experts. Take advantage of the on-board lectures and opportunities for discussion with these specialists to learn more about the poles. Participate in furthering scientific research with PONANT and let us discover together what these fascinating destinations have yet to reveal to us.

### ITTOQQORTOORMIIT REGION

Arrival 13/5/2022

Departure 14/5/2022

Located between the largest national park and the longest system of fjords in the world, the town of Ittoqqortoormiit, whose name means “great house” in Greenlandic, is **one of the remotest inhabited places in the world**. Covered with ice and snow for nine months of the year, you will be able to discover the ancestral way of life of the **last hunters of the polar region**. As soon as the thickness of the ice floe allows, they set out on the trail of walruses, seals, narwhals, musk ox and polar bears, travelling by traditional dog sleds.

## DODMANSBUGTEN

Arrival 15/5/2022

Departure 15/5/2022

In Gael Hamke Bay, you will sail towards **Dodmansbugten**, or “dead man’s bay”, in the south of **Clavering Island**. This is where the last Inuit settlement of Northeast Greenland was discovered around 1823. Here, you can still find typical **trapper cabins** like those described by the Danish explorer and writer Jørn Riel in his stories of the Arctic, humoristic accounts drawn from the dozens of years he spent exploring the fascinating lands of what is now the **Northeast Greenland National Park**. Further west, you will be able to discover the vestiges of the former **Eskimonaes radio and weather station**, captured by German troops during World War II to achieve control of the meteorological intelligence for the region.

## DANMARKSHAVN

Arrival 16/5/2022

Departure 16/5/2022

Sailing through the fascinating landscapes of the **Northeast Greenland National Park**, you will make your way to **Danmarkshavn** on the southern coast of Germania Land. Built in 1948, to this day **Danmarkshavn** remains a station of prime importance for determining meteorological conditions in Europe and North America. Despite the difficulty in accessing this coast often covered by ice, the spot was chosen during the wintering of the *Danmark* in 1906 as the base for an important scientific expedition through the region by dog sled. The north of this bay that is only free of ice for a very short time each year in August can only be reached by ships built to sail through ice.

## EXPLORATION OF NORTHEAST GREENLAND NATIONAL PARK

Arrival 17/5/2022

Departure 17/5/2022

With a craggy coastline formed by **gigantic fjords**, magnificent **alpine mountains** looming over them, the shores of north-east Greenland offer breathtaking landscapes and are home to the largest national park in the world. Covering an area of around one million square kilometres, almost half the island, the North-East Greenland National Park, a **UNESCO Biosphere Reserve**, is a particularly isolated region. Cut off for many months of the year by the ice floe, it is renowned for its pristine nature and **rich wildlife**.

## ÎLE-DE-FRANCE

Arrival 18/5/2022

Departure 18/5/2022

In the **Northeast Greenland National Park**, we are humbled by the changing and extreme ice conditions in this site where we are privileged guests. We will try to go as far north as possible to land on the coast of the famous **Ile-de-France**, a mythical site of French polar expeditions discovered on 28 July 1905 during a polar exploration campaign led by **Philippe of Orléans, Duke of Orléans** (1869-1926). A little-known polar explorer, in 1905, 1907 and 1909 Duke Philippe of Orléans organised three Arctic expeditions aboard *La Belgica*, led by **Captain Adrien de Gerlache de Gomery** and his crew, thus entering the closed circle of the heroes of the Far North. During the 1905 expedition that led him to Spitsbergen in Greenland, he was accompanied by his friend the doctor Joseph Récamier and by the nature artist

Edouard Mérite.

## MYGGBUKTA

Arrival 19/5/2022

Departure 19/5/2022

To the south of the **Northeast Greenland National Park**, near the Hold with Hope Peninsula, in the King Christian X Land region, you will visit **Myggbukta**, a former Norwegian whaling, meteorological and radio station established in 1922 by Johan A. Olsen. It was he who gave this site its name meaning “mosquito bay” in Norwegian. This large bay situated at more than 73° latitude north is covered in **superb arctic tundra** extending as far as the eye can see. This rich vegetation cover allows a large population of **musk oxen** to thrive. If you are lucky, you may get to spot a few.

## AT SEA ABOARD LE COMMANDANT CHARCOT

Arrival 20/5/2022

Departure 21/5/2022

Spend exceptional moments sailing aboard *Le Commandant Charcot*, the world's first luxury polar exploration vessel and the first PC2-class polar cruise ship capable of sailing into the very heart of the ice, on seas and oceans which the frozen conditions render inaccessible to ordinary ships. *Le Commandant Charcot* is fitted with oceanographic and scientific equipment selected by a committee of experts. Take advantage of the on-board lectures and opportunities for discussion with these specialists to learn more about the poles. Participate in furthering scientific research with PONANT and let us discover together what these fascinating destinations have yet to reveal to us.

## REYKJAVÍK

Arrival 22/5/2022 early morning

Disembarkation 22/5/2022 at 7:00 am

Iceland's capital stretches along the edge of a vast bay in the west of the country. **Perlan**, the “Pearl of Reykjavík”, a museum located on 'Oskjuhlíð hill, offers a panoramic view of the lush, green landscapes. A little further, one can easily spot the signpost showing the way to the evangelical **Hallgrímskirkja** church, and to the historical centre where one can stroll along the Skólavörðustígur and the Laugavegur, two lively streets with charming small shops. For some relaxation just outside of the city, visitors have the opportunity to visit the Reykjanes peninsula and its famous thermal lagoons of the **Blue Lagoon**.